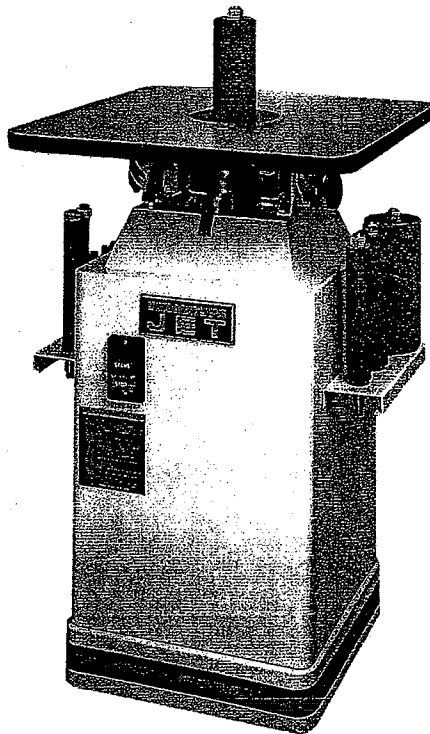


New 3/4/9

JET[®]

OWNER'S MANUAL **JOVS-10 Oscillating Spindle Sander**



WMH TOOL GROUP
Consumer/Light Industrial Products Division
P.O. BOX 1349
Auburn, WA 98071-1349
Ph: 1-800-274-6848 Fax: 1-800-274-6840
E-mail: jet@wmhtoolgroup.com
www.wmhtoolgroup.com

M-708411 11/02
Copyright © WMH Tool Group

Mounting Sanding Sleeves

1. Thoroughly clean the arbors (A, Fig. 1) on all of the spindle assemblies. Also clean the arbor housing on the sander.
2. Slip the sanding sleeve (B, Fig. 1) over the spindle and hold in place by tightening the set screw (C, Fig. 1) with the supplied 2mm hex wrench.
3. Repeat for all of the steel spindle assemblies.
4. To protect the sanding assemblies place them in the holders found on the sides of the sander, see Figure 2.

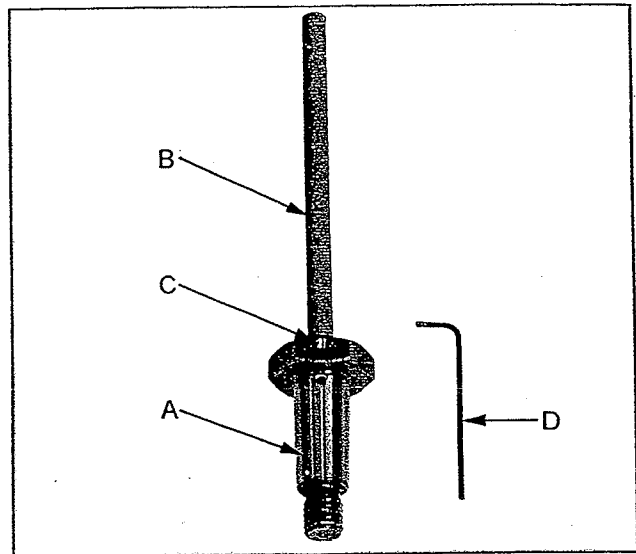
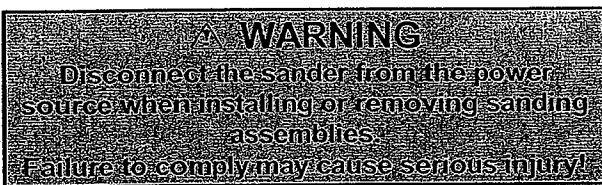


Fig. 1

Installing Sanding Assemblies



1. Thoroughly clean the arbor and arbor housing before installing the sanding assemblies.
2. Thread the arbor (A; Fig. 3) into the arbor housing (B, Fig. 3).
3. Use the provided wrenches to hold the lower arbor housing nut (C, Fig. 3) while turning the arbor nut (D, Fig. 3) clockwise.

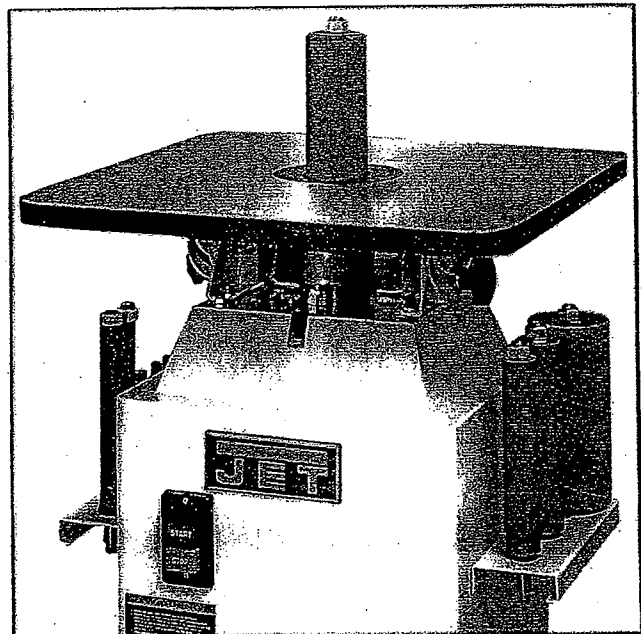


Fig. 2

Removing Sanding Assemblies

1. Disconnect the sander from the power source, unplug.
2. Use the provided wrenches to hold the upper arbor housing nut (E, Fig. 3) while turning the arbor nut (D, Fig. 3) counter-clockwise.

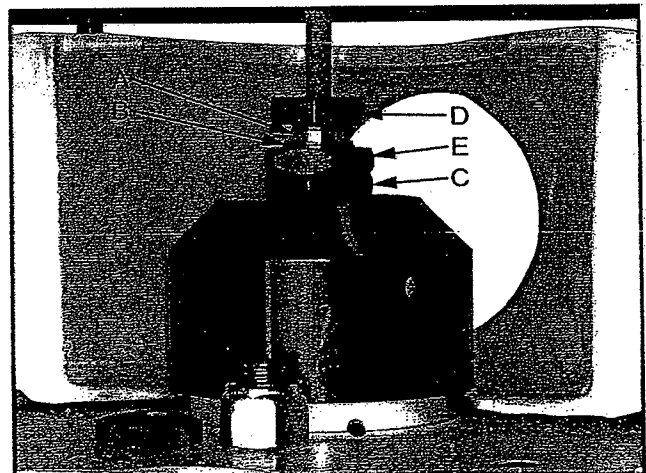


Fig. 3

Table Insert

1. Disconnect the sander from the power source, unplug.
2. Choose the insert (A, Fig. 4) that most closely matches the diameter of the sanding drum.
3. Line up the notch in the insert with the spring pin in the table (B, Fig. 4), and press in place.
4. Remove the insert by pressing up from underneath. **Note:** Keep the opening in the table clean so that the insert can be easily put in place, and removed.

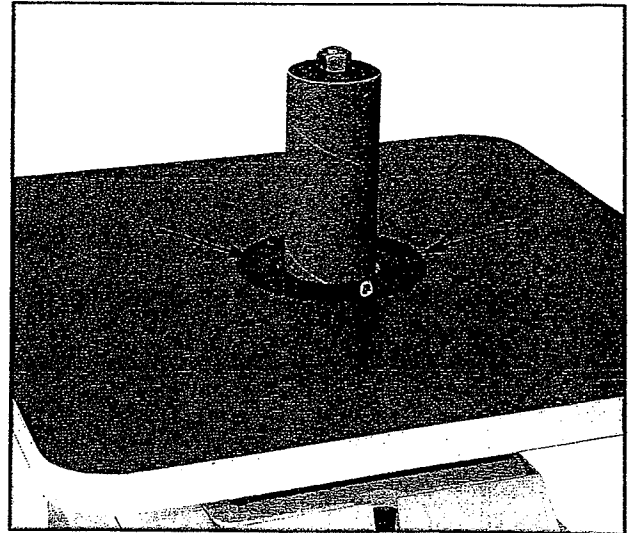


Fig. 4

Sanding Assembly 90° to Table

1. Loosen the lock knobs (C, Fig. 5) on trunnions and position the table so that it rests against the 90° stop (D, Fig. 6). Tighten lock knobs.
2. Place a square (E, Fig. 5) on the working side of the table, and make sure the sanding drum is perpendicular to the table.
3. If an adjustment needs to be made loosen the hex nut (F, Fig. 6).
4. Loosen lock knobs.
5. Rotate the 90° stop in the appropriate direction until the table rests 90° to the sanding drum.
6. Tighten the hex nut while holding the stop.
7. Adjust pointer (G, Fig. 6) so that it indicates the "0" position on the scale.

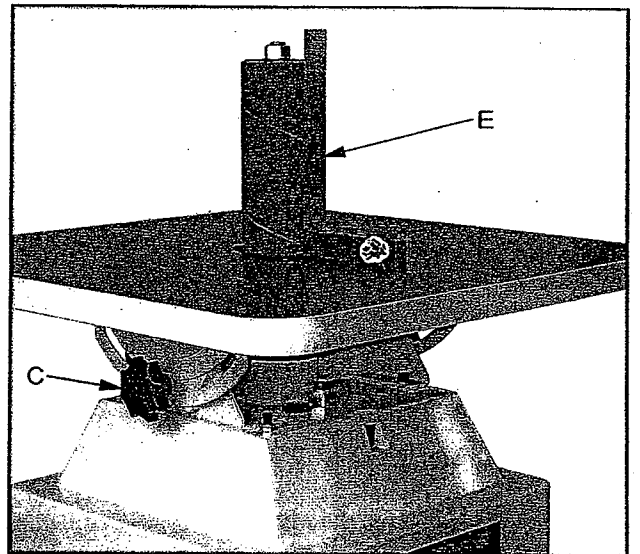


Fig. 5



Fig. 6

Replacing Sanding Sleeves

1. Loosen hex nut (A, Fig. 7) with a 26mm wrench, or large adjustable wrench.
2. Slide the sanding sleeve (B, Fig. 7) off the drum and replace with a new sanding sleeve. **Note:** If the sanding sleeve is not easily removed cut the sleeve off and clean the drum before reinstalling a new sleeve.
3. If you are replacing the sanding sleeves on the steel spindles loosen the set screw found on the arbor nut.
4. Remove sanding sleeve from the spindle and replace with a new sanding sleeve. **Note:** If the sanding sleeve is not easily removed cut the sleeve off and clean the drum before reinstalling a new sleeve.
5. Tighten the set screw.

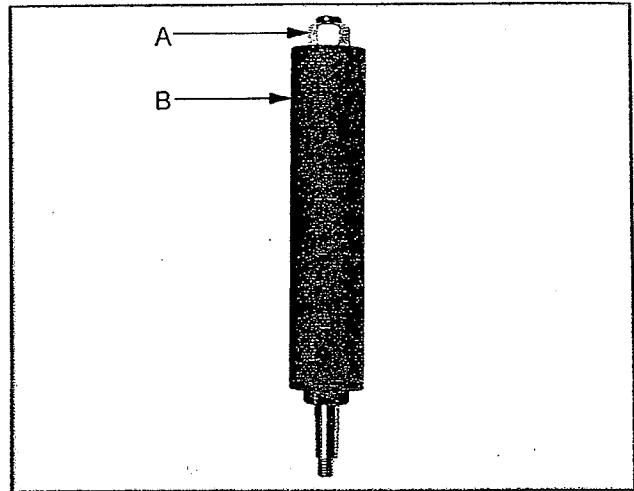


Fig. 7

Dust Collection

In order to collect wood dust; attach a dust collection hose to the dust port. JET has a variety of dust collectors, air filtration units, hoses and adaptors, etc. that will work nicely with your new sander. Contact your local JET Distributor for more information.

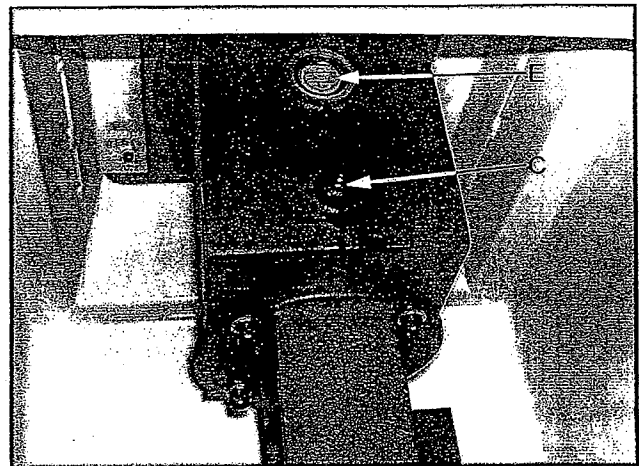


Fig. 8

Maintenance

The manufacturer recommends replacing the 90 SAE gear lube at 800 hours of use.

1. Open the door on the back side of the machine to access the drain plug (C, Fig. 8). Use a 6mm hex wrench to remove the drain plug.
2. Refill oil through the oil cap (D, Fig. 9). The oil capacity is two quarts.
3. The oil sight glass (E, Fig. 8) should read between the "high" and "low" marks.

Keep the machine and all attachments clean.

All bearings are permanently lubricated and require no further service.

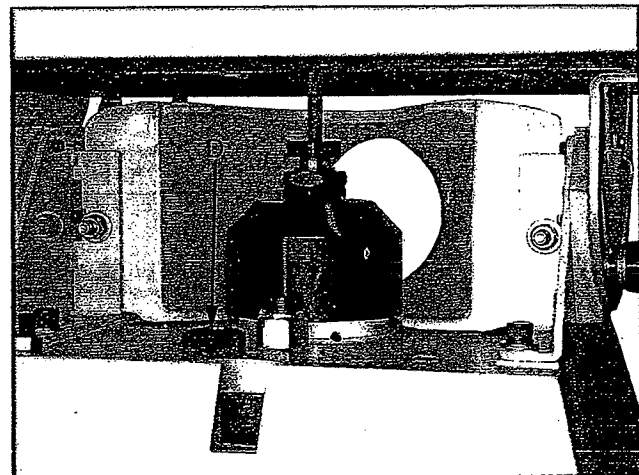


Fig. 9